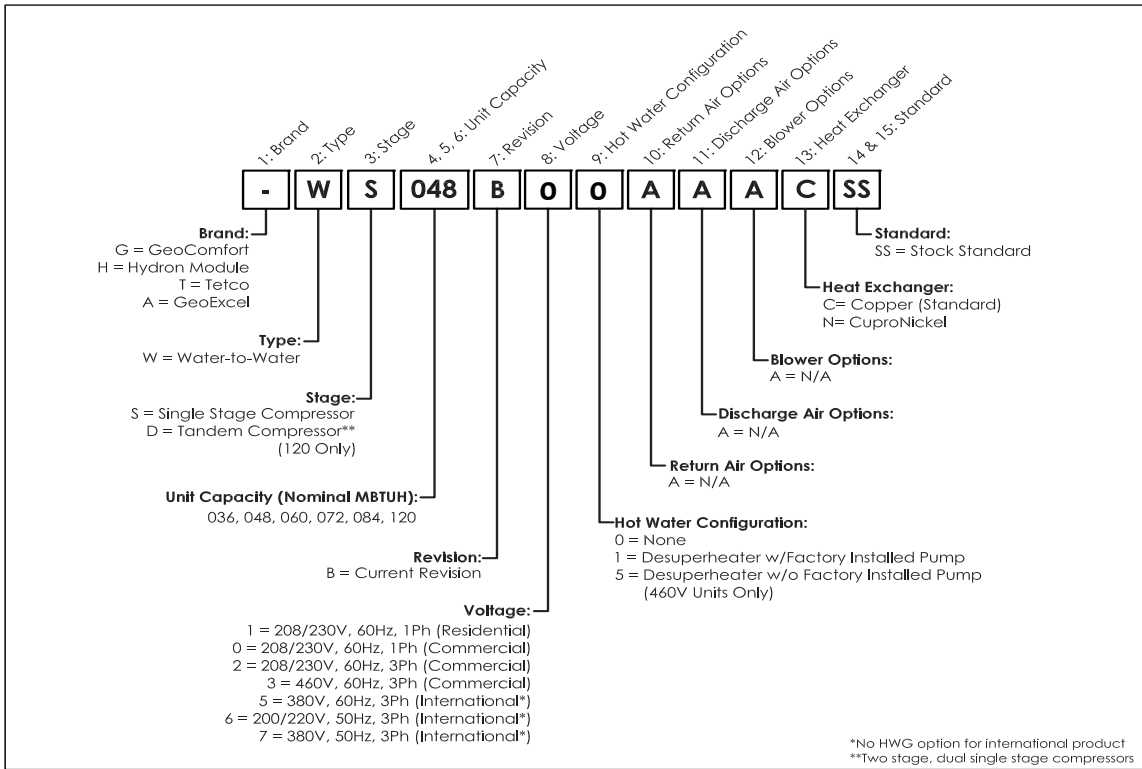


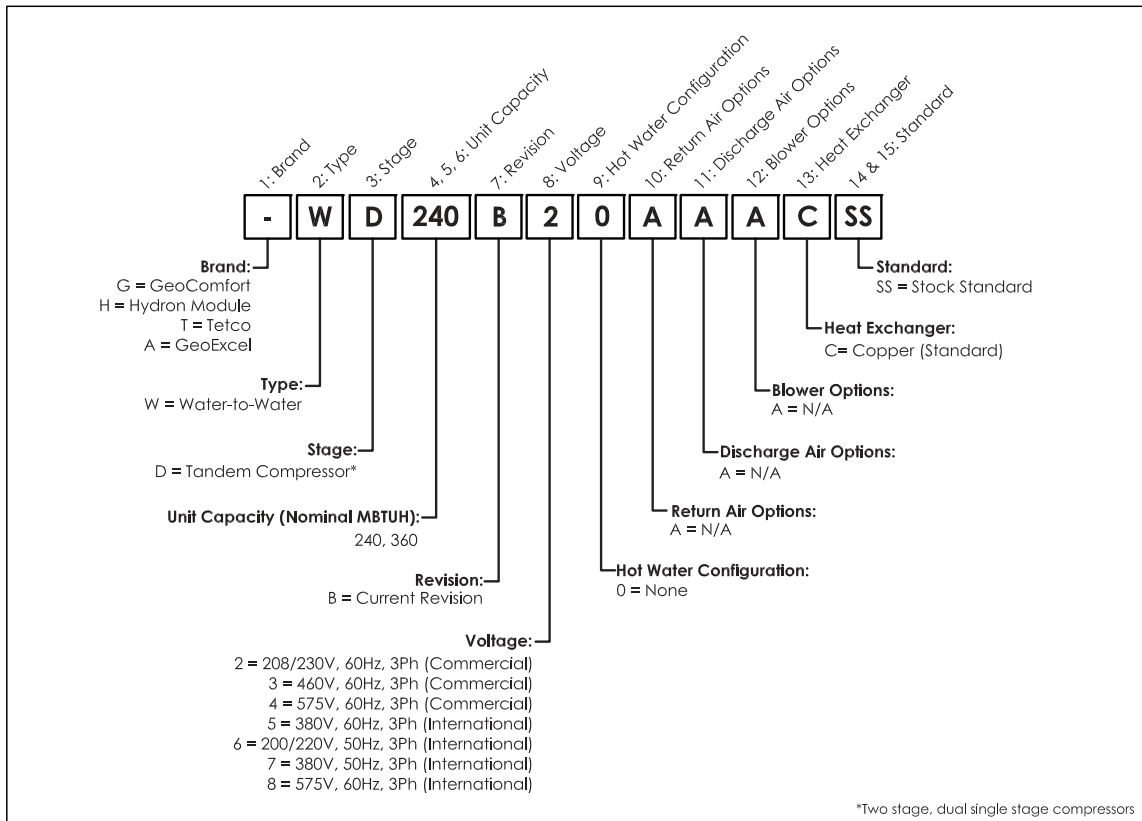


## MODEL NOMENCLATURE DECODERS:

### Single Compressor Model Nomenclature Decoder:



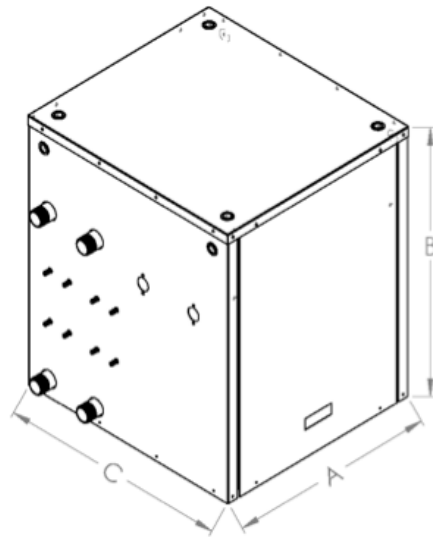
### Dual Compressor Model Nomenclature Decoder:



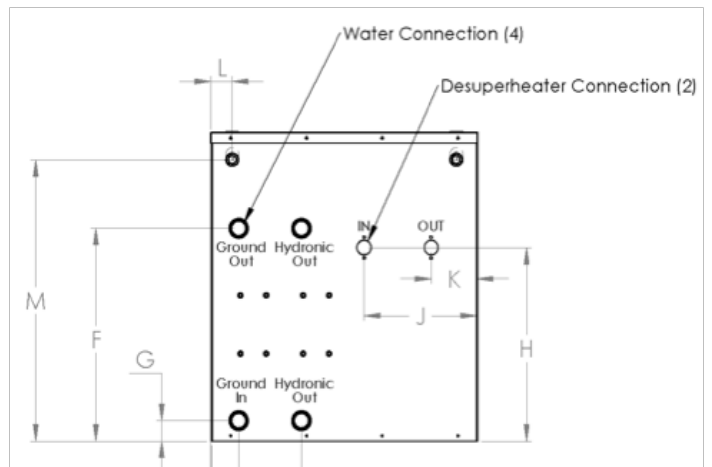
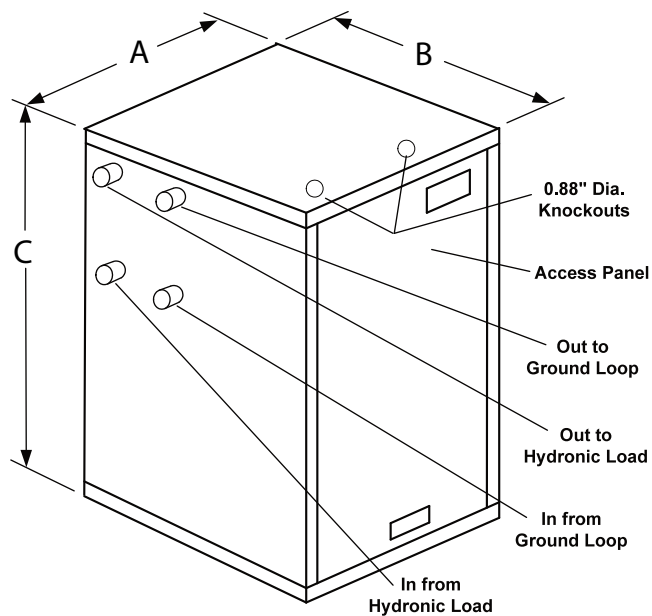
**UNIT DIMENSIONAL DATA:**

Dimension (all in inches)	036 - 084	120	240 - 360
A	23.4	27.0	30
B	29.2	27.5	51
C	25.8	26.1	36.7
D	6.1	-	-
E	3.2	-	-
F	18.1	-	-
G	2.8	-	-
H	18.3	-	-
J	6.5	-	-
K	4.4	-	-
L	2.0	-	-
M	26.5	-	-
N	20.8	-	-
P	25.1	-	-
Water Connections	036 - 084	120	240-360
Ground (copper)	1.25MPT	1.25MPT	2.0MPT
Ground (CuNi)	1.00 FPT	1.00 FPT	2.0MPT
Load	1.25MPT	1.25MPT	2.0MPT
HWG	1.00 FPT	1.00 FPT	N/A

**Unit Dimensional Data, 36 - 084**



**Unit Dimensional Data, 120 - 360**



## SINGLE COMPRESSOR UNIT ELECTRICAL DATA:

Model	Voltage Code/ HWG Option	60 Hz Power		Compressor		Fan Motor FLA	HWG Pump FLA	Ext Loop Pump FLA	Total Unit FLA	Min Circuit AMPS	Max Fuse HACR	Min AWG	Max FT
		Volts	Phase	LRA	RLA								
<b>Single Compressor Units</b>													
036	0	208/230	1	112	17.9	0.0	0.3	0.0	18.2	22.7	40	12	54
	0	208/230	1	112	17.9	0.0	0.0	0.0	17.9	22.4	40	12	55
	1	208/230	1	112	17.9	0.0	0.3	4.0	22.2	26.7	45	10	75
	1	208/230	1	112	17.9	0.0	0.0	4.0	21.9	26.4	40	10	76
	2	208/230	3	88	13.2	0.0	0.3	0.0	13.5	16.8	30	14	47
	2	208/230	3	88	13.2	0.0	0.0	0.0	13.2	16.5	30	14	48
	3	460	3	44	6.0	0.0	0.0	0.0	6.0	7.5	10	14	107
048	0	208/230	1	134	25.4	0.0	0.3	0.0	25.7	32.1	50	8	99
	0	208/230	1	134	25.4	0.0	0.0	0.0	25.4	31.8	50	8	100
	1	208/230	1	134	25.4	0.0	0.3	5.5	31.2	37.6	60	8	82
	1	208/230	1	134	25.4	0.0	0.0	5.5	30.9	37.3	60	8	82
	2	208/230	3	110	15.9	0.0	0.3	0.0	16.2	20.2	35	12	61
	2	208/230	3	110	15.9	0.0	0.0	0.0	15.9	19.9	35	14	40
	3	460	3	52	7.1	0.0	0.0	0.0	7.1	8.9	15	14	90
060	0	208/230	1	178	28.3	0.0	0.3	0.0	28.6	35.7	60	8	89
	0	208/230	1	178	28.3	0.0	0.0	0.0	28.3	35.4	60	8	90
	1	208/230	1	178	28.3	0.0	0.3	5.5	34.1	41.2	60	6	119
	1	208/230	1	178	28.3	0.0	0.0	5.5	33.8	40.9	60	6	120
	2	208/230	3	136	19.2	0.0	0.3	0.0	19.5	24.3	40	12	51
	2	208/230	3	136	19.2	0.0	0.0	0.0	19.2	24.0	40	12	52
	3	460	3	66.1	8.7	0.0	0.0	0.0	8.7	10.9	20	14	74
072	0	208/230	1	148	32.1	0.0	0.3	0.0	32.4	40.4	70	6	125
	0	208/230	1	148	32.1	0.0	0.0	0.0	32.1	40.1	70	6	127
	1	208/230	1	148	32.1	0.0	0.3	5.5	37.9	45.9	70	6	107
	1	208/230	1	148	32.1	0.0	0.0	5.5	37.6	45.6	70	6	108
	2	208/230	3	164	23.2	0.0	0.3	0.0	23.5	29.3	50	10	70
	2	208/230	3	164	23.2	0.0	0.0	0.0	23.2	29.0	50	10	71
	3	460	3	75	11.2	0.0	0.0	0.0	11.2	14.0	25	14	57
084	0	208/230	1	185	32.1	0.0	0.3	0.0	32.4	40.4	70	6	125
	0	208/230	1	185	32.1	0.0	0.0	0.0	32.1	40.1	70	6	127
	1	208/230	1	185	32.1	0.0	0.3	5.5	37.9	45.9	70	6	107
	1	208/230	1	185	32.1	0.0	0.0	5.5	37.6	45.6	70	6	108
	2	208/230	3	164	25.0	0.0	0.3	0.0	25.3	31.6	50	8	101
	2	208/230	3	164	25.0	0.0	0.0	0.0	25.0	31.3	50	8	102
	3	460	3	100	12.2	0.0	0.0	0.0	12.2	15.3	25	14	52

**Notes:**

1. All line and low voltage wiring must adhere to the National Electrical Code and Local Codes, whichever is the most stringent.
  2. Wire length based on a one way measurement with a 2% voltage drop.
  3. Wire size based on 60°C copper conductor and minimum circuit ampacity.
  4. All fuses class RK-5
- \* The external loop pump FLA is based on a maximum of three UP26-116F-230V pumps (1/2hp) for 048 - 060 and two pumps for 034

## DUAL COMPRESSOR UNIT ELECTRICAL DATA:

Model	Voltage Code/ HWG Option	60 Hz Power		Compressor		Fan Motor FLA	HWG Pump FLA	Ext Loop Pump FLA	Total Unit FLA	Min Circuit AMPS	Max Fuse HACR	Min AWG	Max FT
		Volts	Phase	LRA	RLA								
<b>Dual Compressor Units</b>													
120	0	208/230	1	158 ea.	30.1 ea.	0.0	0	0.0	25.0	31.3	50	8	102
	0	208/230	1	158 ea.	30.1 ea.	0.0	0	0.0	12.2	15.3	25	14	52
	1	208/230	1	158 ea.	30.1 ea.	0.0	0	0.0	60.5	68.0	90	4	106
	1	208/230	1	158 ea.	30.1 ea.	0.0	0	0.0	60.2	67.7	90	4	107
	2	208/230	3	155 ea.	20.5 ea.	0.0	0	5.5	66.0	73.5	100	3	126
	2	208/230	3	155 ea.	20.5 ea.	0.0	0	5.5	65.7	73.2	100	3	126
240	3	460	3	75 ea.	9.6 ea.	0.0	0	0.0	41.3	46.4	60	6	98
	2	208/230	3	239 ea.	33.3 ea.	0.0	0	0.0	41.0	46.1	60	6	99
	3	460	3	125 ea.	17.9 ea.	0.0	0	0.0	19.2	21.6	30	12	52
	4	575	3	80 ea.	12.8 ea.	0.0	0	0.0	66.6	74.9	100	3	125
	5	380	3	145 ea.	23.7 ea.	0.0	0	0.0	35.8	40.3	50	6	114
	6	200/220	3	239 ea.	34.6 ea.	0.0	0	0.0	25.6	28.8	40	10	65
360	7	380	3	118 ea.	17.9 ea.	0.0	0	0.0	47.4	53.3	70	6	86
	8	575	3	80 ea.	12.8 ea.	0.0	0	0.0	69.2	77.9	110	3	120
	2	208/230	1	340 ea.	55.8 ea.	0.0	0	0.0	35.8	40.3	50	6	114
	3	460	3	173 ea.	26.9 ea.	0.0	0	0.0	25.6	28.8	40	10	65
	4	575	3	132 ea.	23.7 ea.	0.0	0	0.0	111.6	125.6	175	2/0	199
	5	380	3	196 ea.	34.0 ea.	0.0	0	0.0	53.8	60.5	80	4	119
360	6	200/220	3	325 ea.	50.6 ea.	0.0	0	0.0	47.4	53.3	70	6	86
	7	380	3	173 ea.	25.0 ea.	0.0	0	0.0	68.0	76.5	110	3	122
	8	575	3	132 ea.	23.7 ea.	0.0	0	0.0	101.2	113.9	150	1/0	164
	0	208/230	3	158 ea.	30.1 ea.	0.0	0	0.0	50.0	56.3	80	4	129
	0	208/230	3	158 ea.	30.1 ea.	0.0	0	0.0	47.4	53.3	70	6	86

### Notes:

1. All line and low voltage wiring must adhere to the National Electrical Code and Local Codes, whichever is the most stringent.
2. Wire length based on a one way measurement with a 2% voltage drop.
3. Wire size based on 60°C copper conductor and minimum circuit ampacity.
4. All fuses class RK-5

\* Data for reference only. Single-Phase model no longer available.



www.enertechgeo.com

Greenville, IL - Mitchell, SD  
www.enertechgeo.com  
info@enertechgeo.com



Conforms to  
UL Std 1995  
Certified to  
CAN/CSA Std  
C22.2 No. 236

